

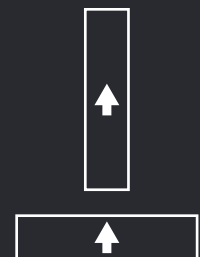
SHAPE LAB



SHAPES
MADE TO ORDER:

Planks
16 X 64 cm

XL planks
16 X 96 cm

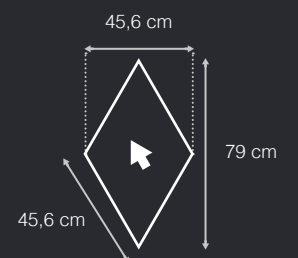


XL tiles
61 X 61 cm

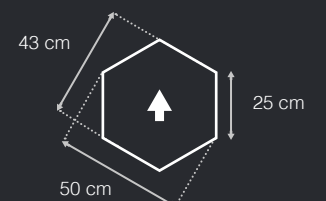
XXL tiles
90 X 90 cm



Diamonds



Hexagons



↑ Warp direction

Each room raises new challenges. That's why Shape Lab allows unprecedented scope for testing and modulating floor surfaces.

From offices to hotels to homes, each space is unique, and so are your decorating choices.

Now available to order in four shapes, Dickson flooring offers countless layout possibilities.

Free yourself from standard layouts or complement them by mixing products to create rhythm, perspectives and reflections to transform interiors.

Allow your imagination free rein by playing with lighting, textures and reflections.

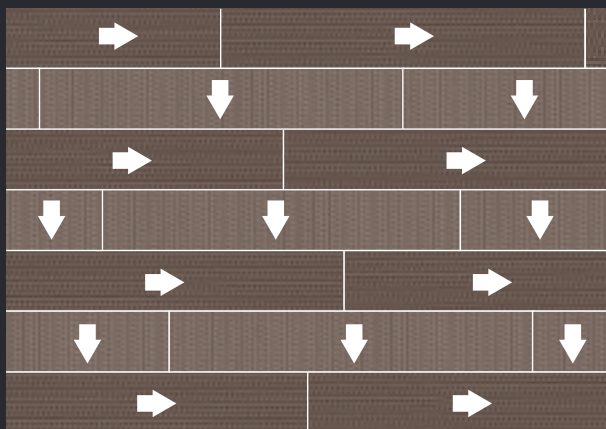
With **six ranges and a palette of unique colours to choose from**, create your own rules and transform flooring into a design feature.

With Shape Lab,
floors are a form of creativity,
flooring an art form.

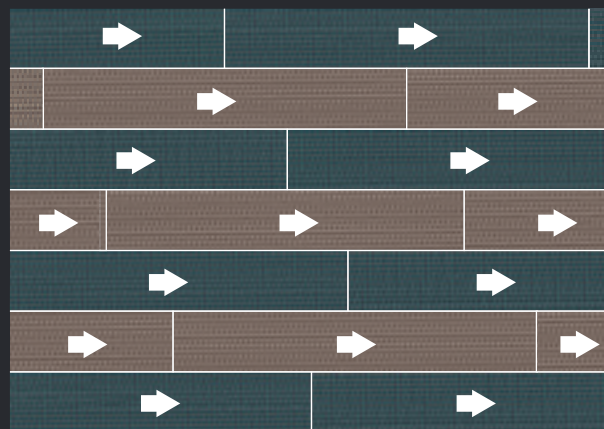
CHOICE OF LAYOUT PATTERNS

RANDOM JOINTS PATTERN

is suitable with standard planks and XL planks. The joints are spaced randomly; the off-cut of the first row is used to start the third row, and the off-cut of the second to start the fourth and so on.



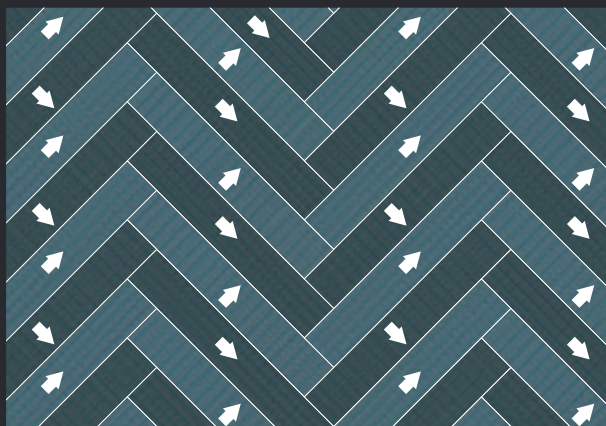
Single-colour random joint pattern of warp weave planks and weft weave planks.



Two-colour random joint pattern with warp weave planks.

HERRINGBONE PATTERN

is suitable with standard planks and XL planks in one or more colours.



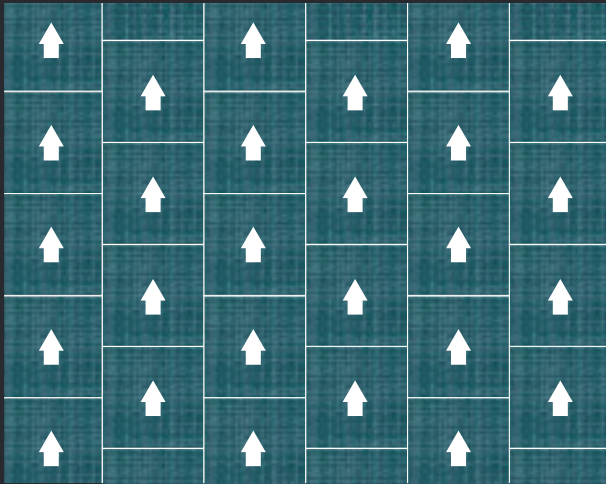
Single-colour herringbone pattern with warp weave planks and weft weave planks.



Two-colour herringbone pattern with warp weave planks and weft weave planks.

MONOLITHIC PATTERN

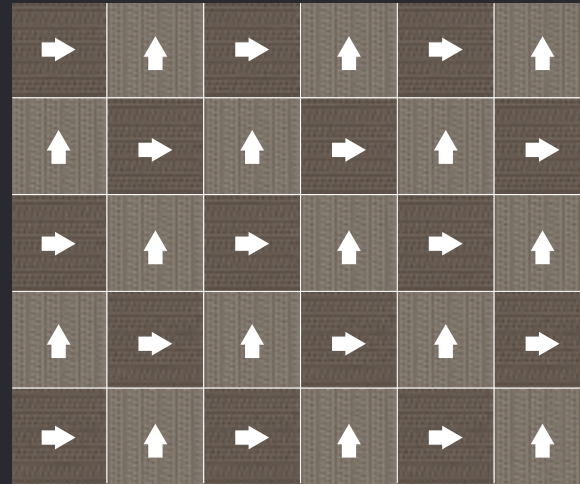
is suitable with the Be Tweed tile range for a uniform look. The ashlar pattern offers the best aesthetic result.



Monolithic pattern with single-colour Be Tweed.

CHECKERBOARD PATTERN

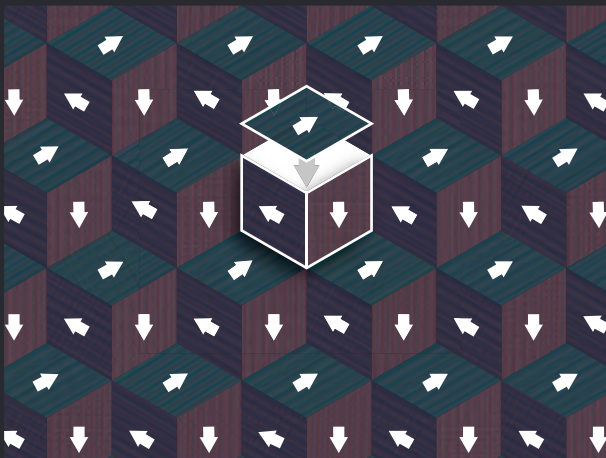
is adapted to all tile ranges in one or more colours.



Single-colour checkerboard pattern.

DIAMOND CUBE PATTERN

creates three different shades in a single colour.



Single-colour diamond pattern.

HEXAGONAL PATTERN

also offers up to three different shades in a single colour, when hexagons are arranged as illustrated below.



Single-colour hexagon pattern.

THE WOVEN STRUCTURE ADDS CHARACTER TO THE LOOK OF YOUR FLOORING AND NATURALLY PLAYS WITH THE LIGHT. VARYING WITH THE SHAPE, COLOUR AND LAYOUT PATTERN, THE DEEP AND SUBTLE HUES OF YOUR FLOORING CHANGE ACCORDING TO THE LIGHTING AND PERSPECTIVE.

Alternative patterns are also available. Please see the Dickson installation guide.